



PlanningPME
Schedule easily



TARGET SKILLS

Tutorial PlanningPME – Desktop Version

Offline Mode





Copyright © 2002-2014 TARGET SKILLS. All rights reserved.

Corporate Headquarters

TARGET SKILLS
39 Rue Michel Ange
91026 EVRY Courcouronnes Cedex
FRANCE

Web site: <http://www.planningpme.com>

Telephone: +33 (0)1 69 47 10 00

TARGET SKILLS believes the information in this publication is accurate as of its publication date. The information is subject to change without notice.

THE INFORMATION IN THIS PUBLICATION IS PROVIDED "AS IS". TARGET SKILLS MAKES NO REPRESENTATIONS OR WARRANTIES OF ANY KIND WITH RESPECT TO THE INFORMATION IN THIS PUBLICATION AND SPECIFICALLY DISCLAIMS IMPLIED WARRANTIES OF MERCHANTABILITY OR FITNESS FOR A PARTICULAR PURPOSE.

No part of this publication may be reproduced, transmitted, transcribed, stored in a retrieval system or translated into any language in any form or by any means without the written permission of TARGET SKILLS.

All trademarks herein are the sole property of their respective owners.



Table of Contents

Minimum requirements 4

Resume 4

How to activate this feature? 4

 Menu Data -> Group4

 Menu Data -> User5

 Connect to the planning with your users rights5

When is the offline database created? 5

How can I see that I am offline? 6

What can I create when I am offline? 6

How are conflicts handled? 6



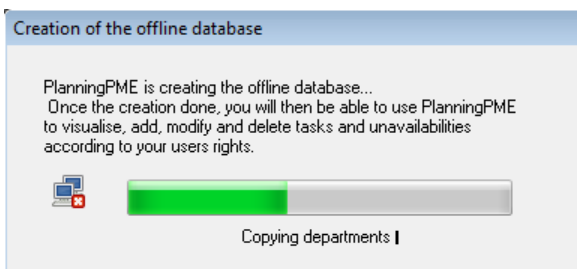
We now added a new feature that allows you to **work off-line** with your planning!
 Indeed, if you are not connected with your network (disconnected from your database), you will still be able to create and modify tasks and unavailabilities on your schedule.
 While reconnecting to your network, tasks and unavailabilities will be synchronised and there will be a check for conflicts, if any.

Minimum requirements

This feature is working only if you have a **SQL-Server database**. The off-line mode is not working if you have a MS Access database (pp file).

We can migrate your database from MS Access to SQL Server. Contact us to have more information.

When you are disconnected from the database, PlanningPME is creating an offline database.



Resume

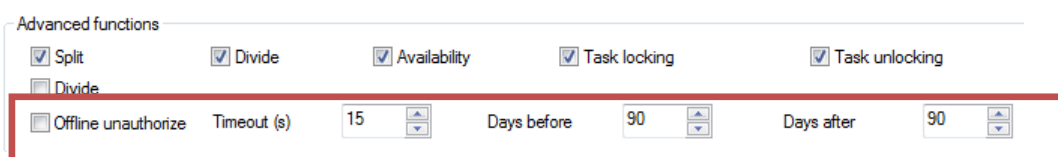
Database	SQL Server
Activation	Create Groups and users
When Offline	
You can	Create tasks and unavailabilities
You can not	Create new clients, projects, resources etc...

How to activate this feature?

Note that the Admin Group can not have access to the "Offline" mode as this feature is deactivated by default. You will then need to create a new group and some users as described below.

Menu Data -> Group

By default, this option is not activated on the users rights. So, you need to give the users permission from the menu **Data -> Group**



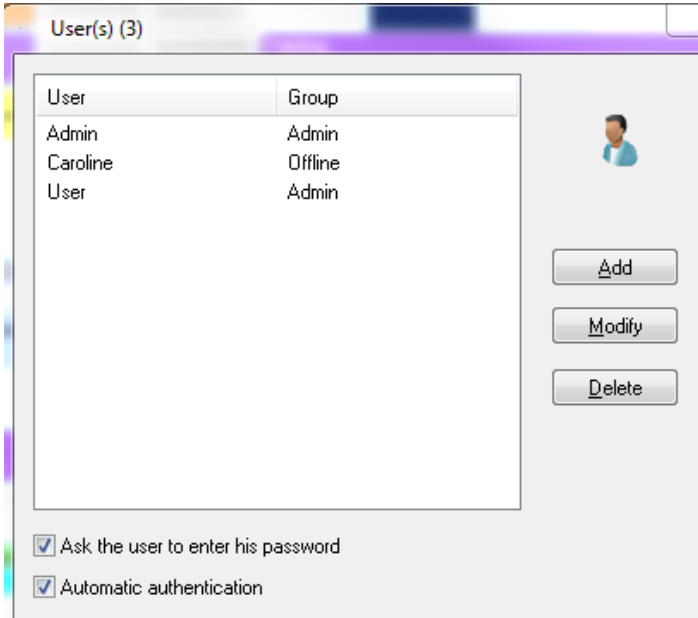
Deselect "Offline unauthorized".

Timeout: Specify the frequency of the tentative of reconnection to the database when offline

Days before / Days after: Define the period of synchronisation of tasks
 You can synchronise a maximum period of 90 days before and after current date.

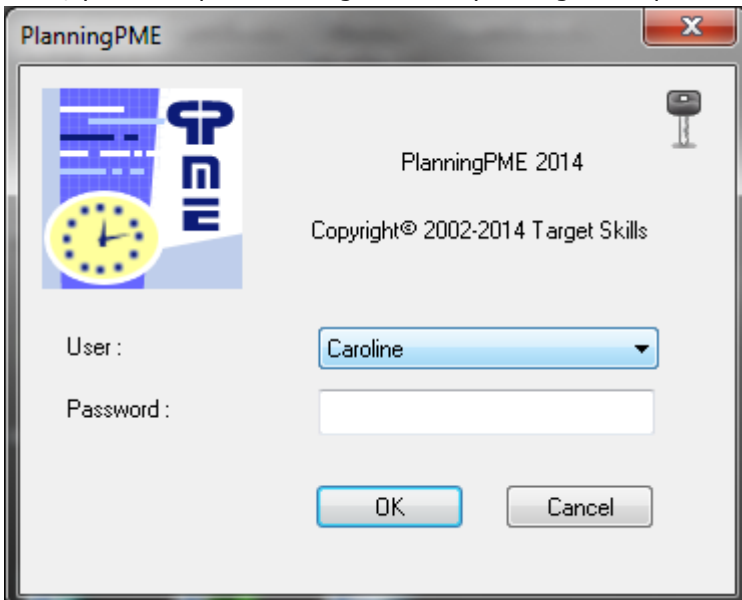
Menu Data -> User

Then, create a user part of this new group created from the menu Data -> User.
 Do not forget to select the option "ask the user to enter his password".



Connect to the planning with your users rights

Then, you can open PlanningPME with your login and password:

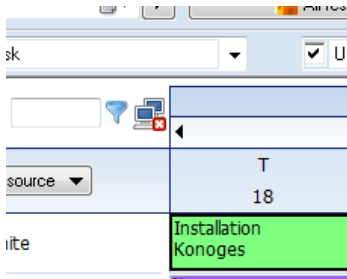


When is the offline database created?

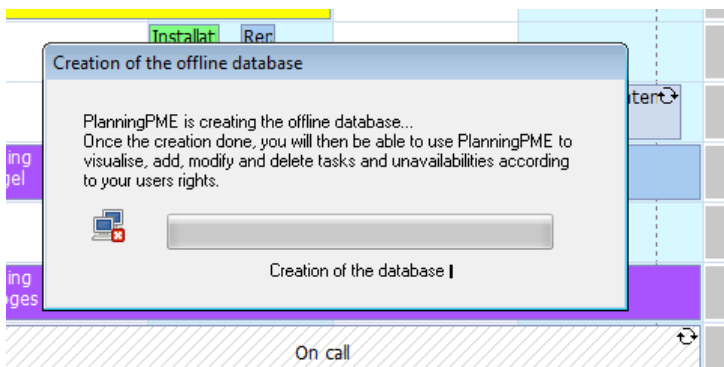
The Offline database is created when you close PlanningPME or when you are disconnected from the database.

How can I see that I am offline?

You can see that you are offline when you see this icon here:



You will also get this message as a local database is then created on your computer:



What can I create when I am offline?

-> You can:

The user can Add/Modify/Delete tasks and unavailabilities depending on his users rights.

-> You can not:

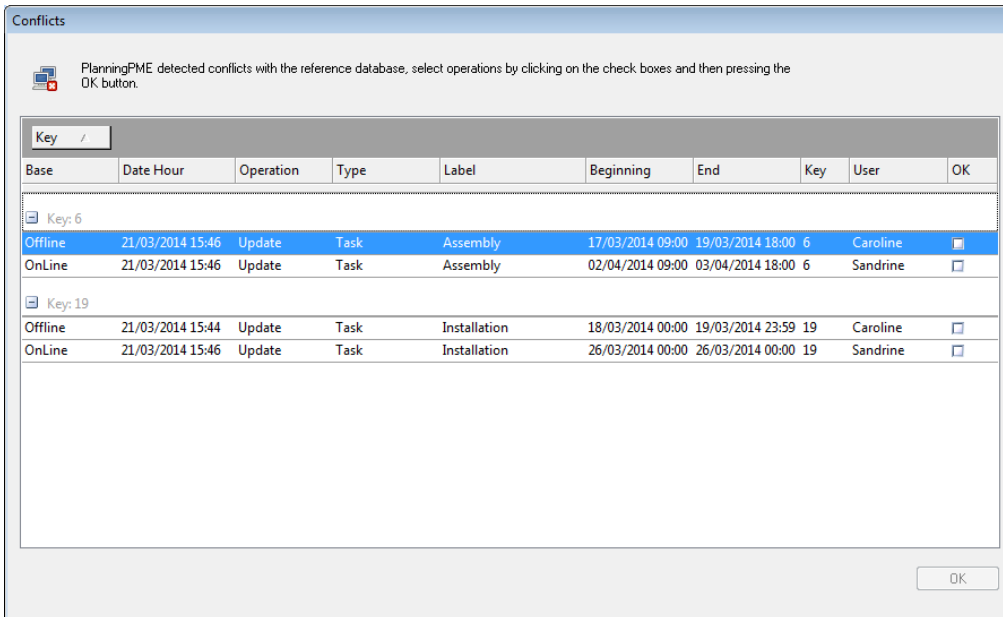
The user can not Add/Modify/Delete resources, customers and projects (Settings that are in the menu Data basically).

The user can not get a task off a recurrence.

How are conflicts handled?

If no users make modifications on the tasks that you changed, your modifications will be applied directly when you are back on the online planning.

If another user change the same tasks, then this conflicts window will open:

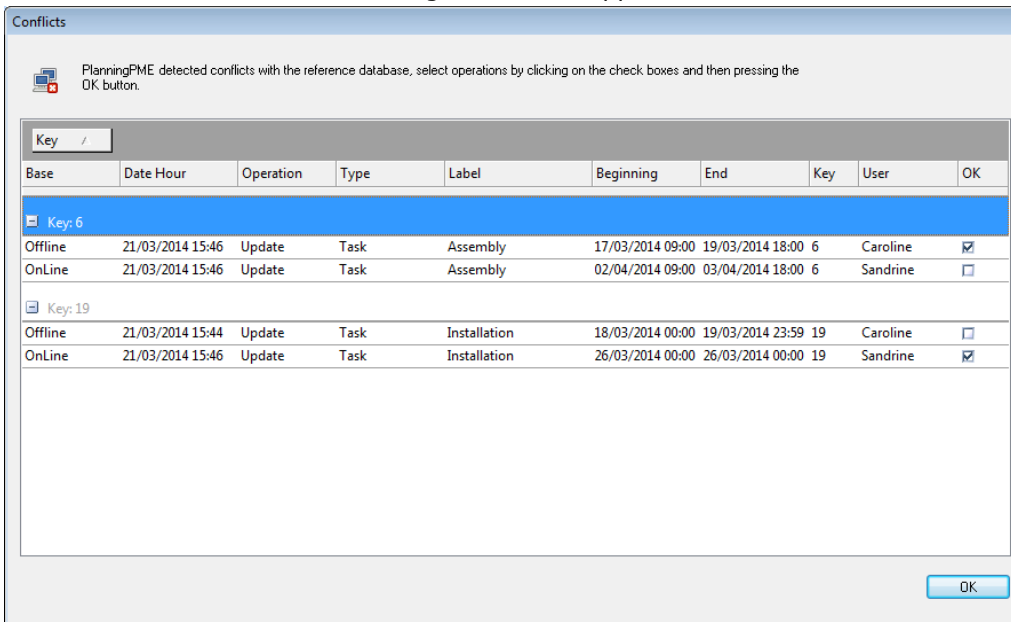


-> **You need to solve conflicts first before being able to work again online.**

You can open the tasks via a double click to check details. Then, you need to select which modification for this particular task should be applied.

On the print screen above, you have two conflicts: one for the task, Key 6 and another one for the task, key 19.

You first need to select which change should be applied for each task to have the button "OK" appearing:



Then, your modifications will be applied.